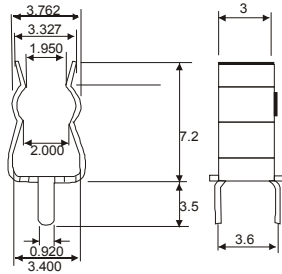




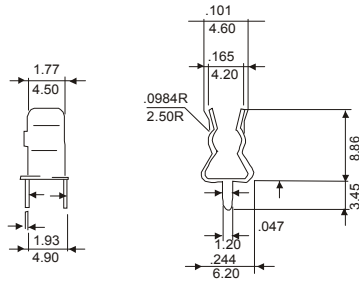
SL001



SPECIFICATIONS:

- *Contact resistance:-10MΩ MAX
- *Life: Lunder 30 cycle 2-1
- *Contact resistance:-10MΩ MAX
- *Rating: 5A/250V AC
- *Salt-mist test: 35 C/5% NaCl Soluytion thru 36 hrs immersed the surface of plating must be broken
- *For 3.6x10mm fuse

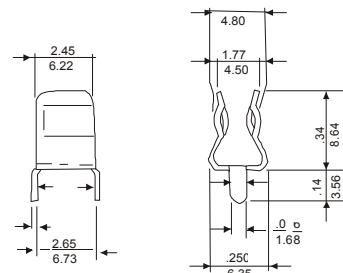
SL002



SPECIFICATIONS:

- *Contact resistance:-10MΩ MAX
- *Life: Lunder 30 cycle 2-1
- *Contact resistance:-10MΩ MAX
- *Rating: 5A/250V AC
- *Salt-mist test: 35 C/5% NaCl Soluytion thru 36 hrs immersed the surface of plating must be broken
- *For 5x20mm fuse

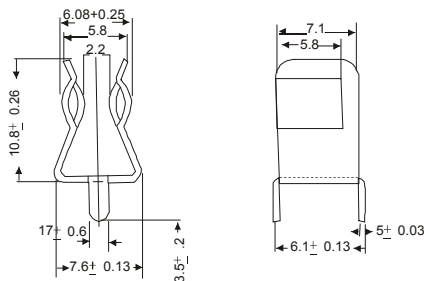
SL003



SPECIFICATIONS:

- *Contact resistance:-10MΩ MAX
- *Life: Lunder 30 cycle 2-1
- *Contact resistance:-10MΩ MAX
- *Rating: 5A/250V AC
- *Salt-mist test: 35 C/5% NaCl Soluytion thru 36 hrs immersed the surface of plating must be broken
- *For 5x20mm fuse

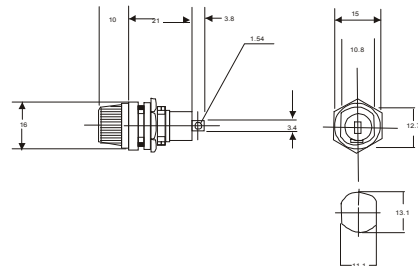
SL004



SPECIFICATIONS:

- *Contact resistance:-10MΩ MAX
- *Life: Lunder 30 cycle 2-1
- *Contact resistance:-10MΩ MAX
- *Rating: 5A/250V AC
- *Salt-mist test: 35 C/5% NaCl Soluytion thru 36 hrs immersed the surface of plating must be broken
- *For 6x30mm fuse

SL005

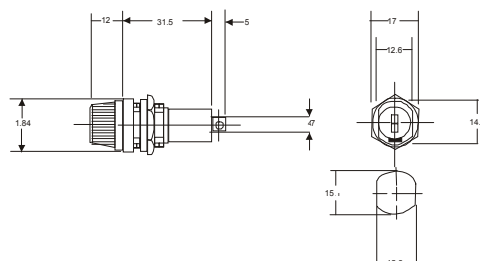


FUSE HOLDER PANEL MOUNT TYPE FOR 5.2x20mm FUSES

SPECIFICATIONS:

- *Electrical: Rated at 10A 250V AC
- *Insulating Body: Bakelite
- *Knob: Finger-grip type with nickel-plated copper alloy insert.
- *Terminals: Nickel-plated copper alloy, solder type.
- *Bottom Contact: with spring.

SL006



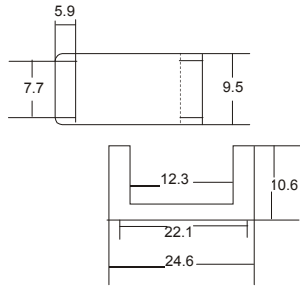
FUSE HOLDER PANEL MOUNT TYPE FOR 6.3x30mm AND 6.3mmx32mm FUSES

SPECIFICATIONS:

- *Electrical: Rated at 10A 250V AC
- *Insulating Body: Bakelite
- *Knob: Finger-grip type with nickel-plated copper alloy insert.
- *Terminals: Nickel-plated copper alloy, solder type.
- *Bottom Contact: with spring.



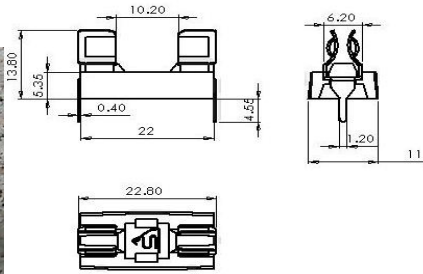
SL007



**FUSE BLOCK P.C TYPE
 FOR 5.2x20mm FUSE**

SPECIFICATION:
 *Electrical: Rated for current up to 6.3A
 *Clip/Terminals: Tin-plated or Nickel-plated.
 Spring Brass. EAR type.
 *Base: Phenolic laminate or Glass fiber
 (to order add suffix G.F.)

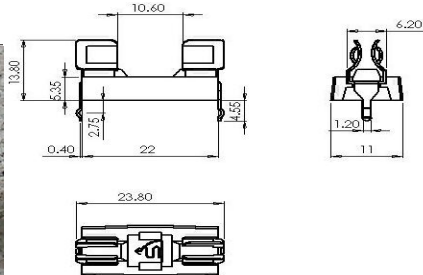
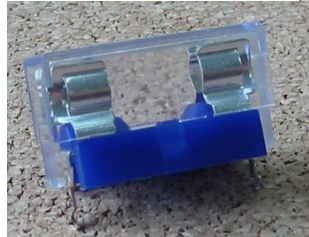
SL007-1



**FUSE BLOCK P.C TYPE
 FOR 2AG FUSE**

SPECIFICATION:
 *Electrical: Rated for current up to 10A
 *Clip/Terminals: Tin-plated or Nickel-plated.
 Spring Brass. EAR type.
 *Base: Phenolic laminate or Glass fiber
 (to order add suffix G.F.)

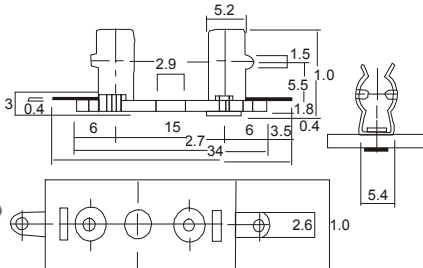
SL007-2



**FUSE BLOCK P.C TYPE
 FOR 5.2x20mm FUSE**

SPECIFICATION:
 *Electrical: Rated for current up to 6.3A
 *Clip/Terminals: Tin-plated or Nickel-plated.
 Spring Brass. EAR type.
 *Base: Phenolic laminate or Glass fiber
 (to order add suffix G.F.)

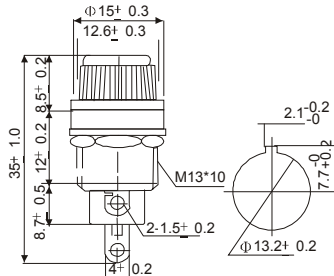
SL010



**FUSE BLOCK WITH SOLDER TERMINAL
 FOR 5.2x20mm FUSE**

SPECIFICATION:
 *Electrical: Rated for current up to 6.3A
 *Clip/Terminals: Tin-plated or Nickel-plated.
 Spring Brass. EAR type.
 *Base: Phenolic laminate or Glass fiber
 (to order add suffix G.F.)

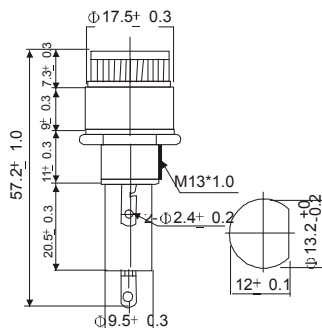
SL011



**FUSE HOLDER PANEL MOUNT TYPE
 FOR 5.2x20mm FUSES**

SPECIFICATION:
 *Electrical: Rated at 10A 250V AC
 *Insulating Body: Bakelite
 *Knob: Finger-grip type with nickel-plated copper alloy insert.
 *Terminals: Nickel-plated copper alloy, solder type.
 *Bottom Contact: with spring.

SL012

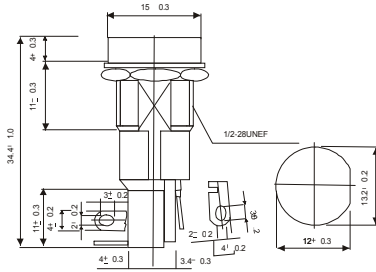


**FUSE HOLDER PANEL MOUNT TYPE
 FOR 6.3x30mm AND 6.3x32mm FUSES**

SPECIFICATION:
 *Electrical: Rated at 10A 250V AC
 *Insulating Body: Bakelite
 *Knob: Finger-grip type with nickel-plated copper alloy insert.
 *Terminals: Nickel-plated copper alloy, solder type.



SL013  



FUSE HOLDER PANEL MOUNT TYPE FOR 5.2x20mm FUSES

SPECIFICATION:

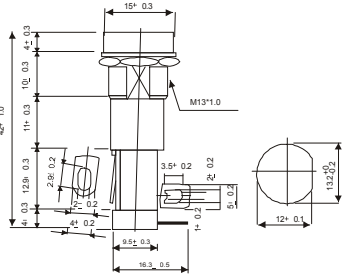
*Electrical: Rated at 10A 250V AC

*Insulating Body: Bakelite

*Knob: Finger-grip fuse extractor type with nickel-plated copper alloy insert. Spring loaded.

*Terminals: Nickel-plated copper alloy, solder type.

SL014  



FUSE HOLDER PANEL MOUNT TYPE FOR 6.3x30mm AND 6.3mmx32mm FUSES.

SPECIFICATION:

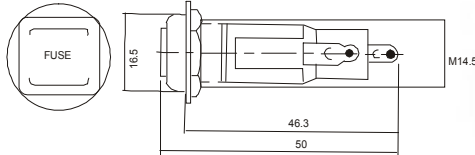
*Electrical: Rated at 10A 250V AC

*Insulating Body: Bakelite

*Knob: Finger-driver slot fuse extractor type with nickel-plated copper alloy insert. Spring loaded.

*Terminals: Nickel-plated copper alloy, right angle terminal solder type.

SL015



FUSE HOLDER PANEL MOUNT TYPE FOR 6.3x30mm AND 6.3mmx32mm FUSES.

SPECIFICATION:

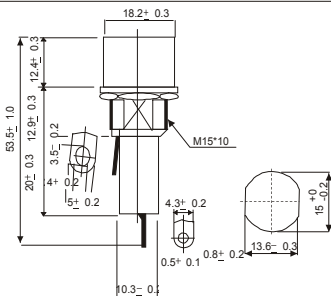
*Electrical: Rated at 10A 250V AC

*Insulating Body: Bakelite

*Knob: Finger-driver slot fuse extractor type with nickel-plated copper alloy insert. Spring loaded.

*Terminals: Nickel-plated copper alloy, right angle terminal solder type.

SL016  



FUSE HOLDER PANEL MOUNT TYPE FOR 6.3x30mm AND 6.3mmx32mm FUSES.

SPECIFICATION:

*Electrical: Rated at 10A 250V AC

*Insulating Body: Bakelite

*Knob: Finger-driver slot fuse extractor type with nickel-plated copper alloy insert. Spring loaded.

*Terminals: Nickel-plated copper alloy, right angle terminal solder type.

SL017



IN-LINE FUSE HOLDER SCREW TYPE

SPECIFICATION:

*Applicable: For fuse 5.2x20mm

*Electrical: Rated for currents up to 20A, When proper spring is installed for fuse size.

*Wire: Supplied when an 8" loop of 12# AWG rde viny insulated wire.

*Insulating Body: Bakelite

*Contacts: Brass

Note: with other wire sizes or lengths available on special prder.

SL018



IN-LINE FUSE HOLDER SCREW TYPE

SPECIFICATION:

*Applicable: For fuse 6.3x30mm

*Electrical: Rated for currents up to 50A, When proper spring is installed for fuse size.

*Wire: Supplied when an 8" loop of 18# AWG rde viny insulated wire.

*Insulating Body: Bakelite

*Contacts: Brass

Note: with other wire sizes or lengths available on special prder.